

KÜRESEL VANA (ÇELİK)

BALL VALVE (STEEL)

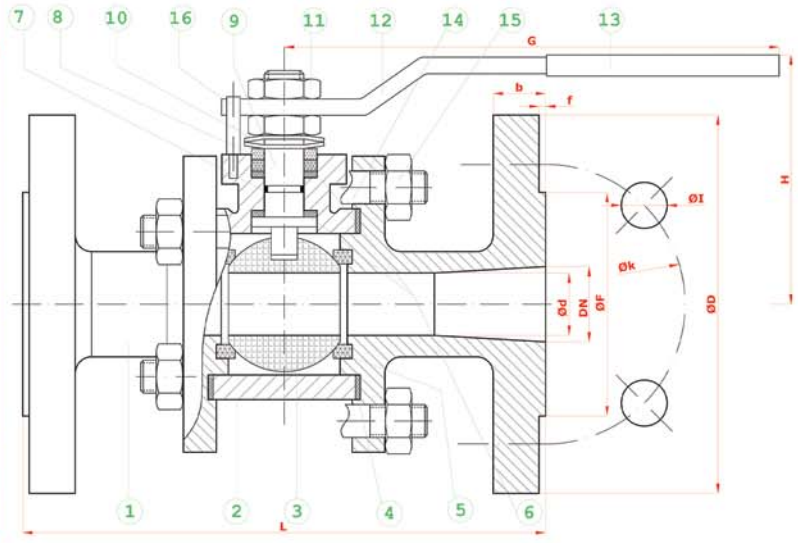
REDÜKSİYON GEÇİŞLİ / FLANŞLI
REDUCED BORE / FLANGED

TİP (TYPE) : BKV - FL - RG
DN 15 - DN 300

Boyutlar	Dimensions	: TS 3148 // EN 558-1
Bağlantılar	Connections	: FLANŞLI / FLANGED PN 16; DIN 2533 // EN 1092-1 FLANŞLI / FLANGED PN 40; DIN 2545 // EN 1092-2
Çalışma Basıncı	Working Pressure	: PN 16 - PN 40
Çalışma Sıcaklığı	Working Temperature	: -30 °C // +180°C
Kullanım Alanları	Usage Areas	: Su, Sıcak Su, Buhar, Basıncı Hava Water, Hot Water, Steam, Pressurized Air



MALZEME BİLGİSİ MATERIAL DATA			
PARÇA NO / ITEM NO	ADET / PCS	PARÇA ADI / ITEM DESCRIPTION	MALZEME / MATERIAL
16	1	STOPLAMA PİMİ / STOPPING PIM	ST 42 Gal.
15	8	SOMUN / NUT	5.6
14	4	SAPLAMA / STUD	CK 35 - CK 45
13	1	PLASTİK KAPLAMA / PLASTIC COVERING	PVC
12	1	KÜRE HAREKET KOLU / BALL ACTION HANDLE	st 37
11	2	KONTRA SOMUN / COUNTER NUT	5,6 Gal.
10	2	ÇANAK PUL / BOWL WASHER	50 Cr V 4
9	1	HAREKET MİLİ / ACTION SPINDLE	1,4021
8	1	BASKI RİNGİ / PRESSURE RING	MS 58
7	1	MİL O-RİNG / SPINDLE O-RING	VİTON
6	2	BOĞAZ SIZDIRMAZLIK / NECK TIGHTNESS ELEMENT	PTFE-Teflon
5	2	KÜRE SIZDIRMAZLIK / BALL TIGHTNESS ELEMENT	PTFE-Teflon
4	2	GÖVDE SIZDIRMAZLIK / BODY TIGHTNESS ELEMENT	PTFE-Teflon
3	1	KÜRE / BALL	1.4301 / 1.4086
2	1	GÖVDE / BODY	A 216 WCB
1	2	KAPAK / COVER	St 37-2



TİP (TYPE)	BOYUTLAR (DIMENSIONS)							BAĞLANTI ÖLÇÜLERİ (CONNECTION SIZES)												
	PN 16 - 40							PN 16				PN 40								
BKV FL-RG	L	G	H	DN	d	f	D	k	Hole Unit	I	F	b	Kg	D	k	Hole Unit	I	F	b	Kg
DN 15	130	150	75	15	12	2	95	65	4	14	45	14	2,00	95	65	4	14	45	16	2,70
DN 20	150	150	75	20	15	2	105	75	4	14	58	16	2,80	105	75	4	14	58	18	3,10
DN 25	160	150	83	25	20	2	115	85	4	14	68	16	4,10	115	85	4	14	68	18	4,40
DN 32	180	180	90	32	25	2	140	100	4	18	78	16	5,30	140	100	4	18	78	18	5,75
DN 40	200	230	95	40	32	3	150	110	4	18	88	16	7,50	150	110	4	18	88	18	7,60
DN 50	230	275	115	50	40	3	165	125	4	18	102	18	9,60	165	125	4	18	102	20	10,85
DN 65	290	275	120	65	50	3	185	145	4	18	122	18	12,50	185	145	8	18	122	22	14,50
DN 80	310	320	135	80	65	3	200	160	8	18	138	20	16,30	200	160	8	18	138	24	18,80
DN 100	350	380	150	100	80	3	220	180	8	18	158	20	28,00	235	190	8	22	162	24	34,70
DN 125	400	450	170	125	100	3	250	210	8	18	188	22	37,00	270	220	8	26	188	26	42,00
DN 150	450	450	200	150	125	3	285	240	8	22	212	22	50,00	300	250	8	26	218	28	84,00
DN 200	550	650	235	200	150	3	340	295	12	22	268	24	80,0	375	320	12	30	285	34	92,0
DN 250	650	900	270	250	200	3	405	355	12	26	320	32	160,0	450	385	12	30	345	38	195,0
DN 300	750	1100	370	300	250	4	460	410	12	26	378	28		515	450	16	33	410	42	

BATUSAN standartlar içerisinde kalarak; dizayn, konstrüksiyon ve malzeme değiştirme hakkına sahiptir.
BATUSAN has rights to change for desing, construction and material of it's products with respect to standards