

KÜRESEL VANA (ÇELİK)

BALL VALVE (STEEL)

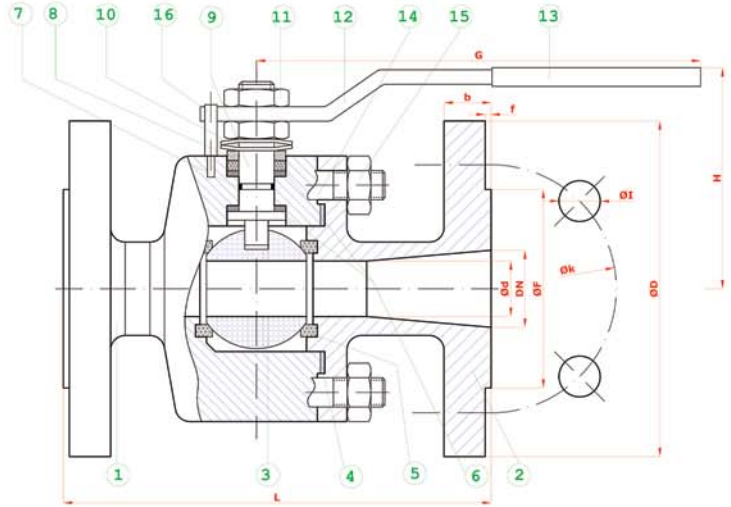
REDÜKSİYON GEÇİŞLİ / FLANŞLI
REDUCED BORE / FLANGED

TİP (TYPE) : BKV - FL - RG
DN 15 - DN 200



Boyutlar	Dimensions	: TS 3148 // EN 558-1 // DIN 3202 F 4-5
Bağlantılar	Connections	: FLANŞLI / FLANGED DIN 2545 // EN 1092-1
Çalışma Basıncı	Working Pressure	: PN 16 - PN 40
Çalışma Sıcaklığı	Working Temperature	: -30 °C // +180°C
Kullanım Alanları	Usage Areas	: Su, Sıcak Su, Buhar, Basıncılı Hava Water, Hot Water, Steam, Pressurized Air

MALZEME BİLGİSİ / MATERIAL DATA			
PARÇA NO / ADET / ITEM NO / PCS	PARÇA ADI / ITEM DESCRIPTION	MALZEME / MATERIAL	
16	1 STOPLAMA PİMİ / STOPPING PIM	ST 42 Gal.	.1.4301
15	8 SOMUN / NUT	S.6	.1.4301
14	4 SAPLAMA / STUD	4140-S140	.1.4301
13	1 PLASTİK KAPLAMA / PLASTIC COVERING	PVC	PVC
12	1 KÜRE HAREKET KOLU / BALL ACTION HANDLE	st 37	.1.4301
11	2 KONTRA SOMUN / COUNTER NUT	S.6 Gal.	.1.4301
10	2 ÇANAK PUL / BOWL WASHER	50 Cr V 4	.1.4301
9	1 HAREKET MİLİ / ACTION SPINDLE	1.4021	.1.4301 / 1.4401
8	1 BASKI RİNGİ / PRESSURE RING	MS 58	.1.4301 / 1.4401
7	1 MİL O-RİNG / SPINDLE O-RING	VİTON	VİTON
6	2 BOĞAZ SIZDIRMAZLIK TEFLONU / NECK TIGHTNESS ELEMENT	PIFE-Teflon	PIFE-Teflon
5	2 KÜRE SIZDIRMAZLIK TEFLONU / BALL TIGHTNESS ELEMENT	PIFE-Teflon	PIFE-Teflon
4	2 GÖVDE SIZDIRMAZLIK TEFLONU / BODY TIGHTNESS ELEMENT	PIFE-Teflon	PIFE-Teflon
3	1 KÜRE / BALL	1.4301 / 1.4006	1.4301/4 / 1.4401
2	1 GÖVDE / BODY	SAE 1020	.1.4301 / 1.4401
1	2 KAPAK / COVER	SAE 1020	.1.4301 / 1.4401



TİP (TYPE)	BOYUTLAR (DIMENSIONS)													BAĞLANTI ÖLÇÜLERİ (CONNECTION SIZES)							
	PN 16 - 40						PN 16							PN 40							
BKV FL-RG	L	G	H	DN	d	f	D	k	Hole Unit	I	F	b	Kg	D	k	Hole Unit	I	F	b	Kg	
DN 15	115	150	75	15	12	2	95	65	4	14	45	14		95	65	4	14	45	16		
DN 20	120	150	83	20	15	2	105	75	4	14	58	16		105	75	4	14	58	18		
DN 25	125	150	83	25	20	2	115	85	4	14	68	16		115	85	4	14	68	18		
DN 32	130	180	90	32	25	2	140	100	4	18	78	16		140	100	4	18	78	18		
DN 40	140	230	95	40	32	3	150	110	4	18	88	16		150	110	4	18	88	18		
DN 50	150	275	115	50	40	3	165	125	4	18	102	18		165	125	4	18	102	20		
DN 65	170	275	120	65	50	3	185	145	4	18	122	18		185	145	8	18	122	22		
DN 80	180	320	135	80	65	3	200	160	8	18	138	20		200	160	8	18	138	24		
DN 100	190	380	150	100	80	3	220	180	8	18	158	20		235	190	8	22	162	24		
DN 125	325	450	170	125	100	3	250	210	8	18	188	22		270	220	8	26	188	26		
DN 150	350	450	200	150	125	3	285	240	8	22	212	22		300	250	8	26	218	28		
DN 200	400	650	235	200	150	3	340	295	12	22	268	24		375	320	12	30	285	34		

BATUSAN standartlar içerisinde kalarak; dizayn, konstrüksiyon ve malzeme değiştirme hakkına sahiptir.
BATUSAN has rights to change for desing, construction and material of it's products with respect to standards