

DOĞALGAZ KÜRESEL VANA (ÇELİK)

NATURAL GAS BALL VALVE (STEEL)

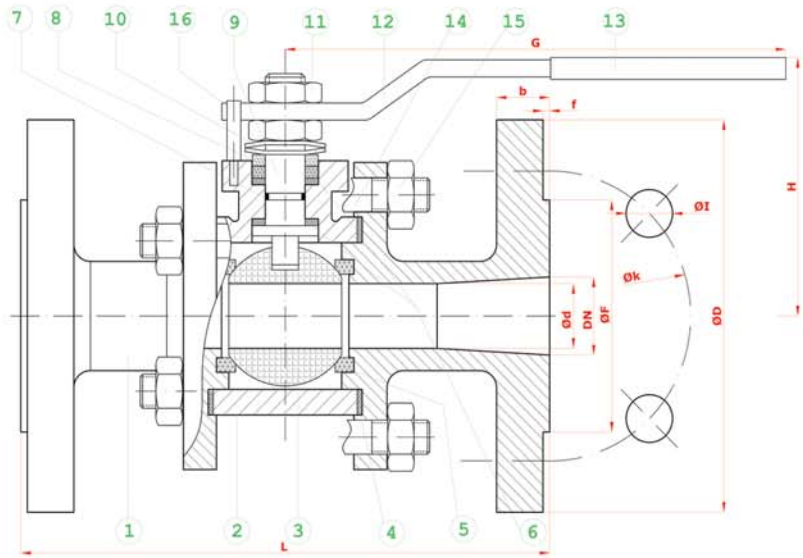
REDÜKSİYON GEÇİŞLİ / FLANŞLI
REDUCED BORE / FLANGED

TİP (TYPE) : BDKV - FL - RG
DN 15 - DN 300



| | | |
|-------------------|---------------------|---|
| Boyutlar | Dimensions | : TS 9809 // EN 558-1 |
| Bağlantılar | Connections | : FLANŞLI / FLANGED PN 16; DIN 2533 // EN 1092-1 FLANŞLI / FLANGED PN 40; DIN 2545 // EN 1092-2 |
| Çalışma Basıncı | Working Pressure | : PN 16 - PN 40 |
| Çalışma Sıcaklığı | Working Temperature | : -30 °C // +180°C |
| Kullanım Alanları | Usage Areas | : Doğalgaz, LPG-LNG, Fuel-Oil, Basıncılı Hava ve Diğer Gazlar Natural Gas, LPG-LNG, Fuel-Oil, Pressurized Air and Other Gases etc. |

| MALZEME BİLGİSİ MATERIAL DATA | | | |
|-------------------------------|-------------|--|---------------------|
| PARÇA NO ITEM NO | ADET PCS | PARÇA ADI ITEM DESCRIPTION | MALZEME MATERIAL |
| 16 | 1 | STOPLAMA PİMİ STOPPING PIM | ST 42 Gal. |
| 15 | 8 | SOMUN NUT | 5.6 |
| 14 | 4 | SAPLAMA STUD | CK 35 - CK 45 |
| 13 | 1 | PLASTİK KAPLAMA PLASTIC COVERING | PVC |
| 12 | 1 | KÜRE HAREKET KOLU BALL ACTION HANDLE | st 37 |
| 11 | 2 | KONTRA SOMUN COUNTER NUT | 5.6 Gal. |
| 10 | 2 | ÇANAK PUL BOWL WASHER | 50 Cr V 4 |
| 9 | 1 | HAREKET MİLİ ACTION SPINDLE | 1,4021 |
| 8 | 1 | BASKI RİNGİ PRESSURE RING | MS 58 |
| 7 | 1 | MİL O-RING SPINDLE O-RING | VİTON |
| 6 | 2 | BOĞAZ SIZDIRMAZLIK NECK TIGHTNESS ELEMENT | PTFE-Teflon |
| 5 | 2 | KÜRE SIZDIRMAZLIK BALL TIGHTNESS ELEMENT | PTFE-Teflon |
| 4 | 2 | GÖVDE SIZDIRMAZLIK BODY TIGHTNESS ELEMENT | PTFE-Teflon |
| 3 | 1 | KÜRE BALL | 1.4301 / 1.4086 |
| 2 | 1 | GÖVDE BODY | A 216 WCB |
| 1 | 2 | KAPAK COVER | St 37-2 |



| TİP (TYPE) BDKV FL-RG | BOYUTLAR (DIMENSIONS) | | | | | | | BAĞLANTI ÖLÇÜLERİ (CONNECTION SIZES) | | | | | | | | | | | | |
|-----------------------------|-------------------------|------|-----|-----|-----|---|-----|--|-----------|----|-----|----|-------|-------|-----|-----------|----|-----|----|-------|
| | PN 16 - 40 | | | | | | | PN 16 | | | | | | PN 40 | | | | | | |
| | L | G | H | DN | d | f | D | k | Hole Unit | I | F | b | Kg | D | k | Hole Unit | I | F | b | Kg |
| DN 15 | 130 | 150 | 75 | 15 | 12 | 2 | 95 | 65 | 4 | 14 | 45 | 14 | 2,00 | 95 | 65 | 4 | 14 | 45 | 16 | 2,70 |
| DN 20 | 150 | 150 | 75 | 20 | 15 | 2 | 105 | 75 | 4 | 14 | 58 | 16 | 2,80 | 105 | 75 | 4 | 14 | 58 | 18 | 3,10 |
| DN 25 | 160 | 150 | 83 | 25 | 20 | 2 | 115 | 85 | 4 | 14 | 68 | 16 | 4,10 | 115 | 85 | 4 | 14 | 68 | 18 | 4,40 |
| DN 32 | 180 | 180 | 90 | 32 | 25 | 2 | 140 | 100 | 4 | 18 | 78 | 16 | 5,30 | 140 | 100 | 4 | 18 | 78 | 18 | 5,75 |
| DN 40 | 200 | 230 | 95 | 40 | 32 | 3 | 150 | 110 | 4 | 18 | 88 | 16 | 7,50 | 150 | 110 | 4 | 18 | 88 | 18 | 7,60 |
| DN 50 | 230 | 275 | 115 | 50 | 40 | 3 | 165 | 125 | 4 | 18 | 102 | 18 | 9,60 | 165 | 125 | 4 | 18 | 102 | 20 | 10,85 |
| DN 65 | 290 | 275 | 120 | 65 | 50 | 3 | 185 | 145 | 4 | 18 | 122 | 18 | 12,50 | 185 | 145 | 8 | 18 | 122 | 22 | 14,50 |
| DN 80 | 310 | 320 | 135 | 80 | 65 | 3 | 200 | 160 | 8 | 18 | 138 | 20 | 16,30 | 200 | 160 | 8 | 18 | 138 | 24 | 18,80 |
| DN 100 | 350 | 380 | 150 | 100 | 80 | 3 | 220 | 180 | 8 | 18 | 158 | 20 | 28,00 | 235 | 190 | 8 | 22 | 162 | 24 | 34,70 |
| DN 125 | 400 | 450 | 170 | 125 | 100 | 3 | 250 | 210 | 8 | 18 | 188 | 22 | 37,00 | 270 | 220 | 8 | 26 | 188 | 26 | 42,00 |
| DN 150 | 450 | 450 | 200 | 150 | 125 | 3 | 285 | 240 | 8 | 22 | 212 | 22 | 50,00 | 300 | 250 | 8 | 26 | 218 | 28 | 84,00 |
| DN 200 | 550 | 650 | 235 | 200 | 150 | 3 | 340 | 295 | 12 | 22 | 268 | 24 | 80,0 | 375 | 320 | 12 | 30 | 285 | 34 | 92,0 |
| DN 250 | 650 | 900 | 270 | 250 | 200 | 3 | 405 | 355 | 12 | 26 | 320 | 32 | 160,0 | 450 | 385 | 12 | 30 | 345 | 38 | 195,0 |
| DN 300 | 750 | 1100 | 370 | 300 | 250 | 4 | 460 | 410 | 12 | 26 | 378 | 28 | | 515 | 450 | 16 | 33 | 410 | 42 | |

BATUSAN standartlar içerisinde kalarak; dizayn, konstrüksiyon ve malzeme değiştirme hakkına sahiptir.

BATUSAN has rights to change for desing, construction and material of it's products with respect to standards